

LEECH CARBIDE

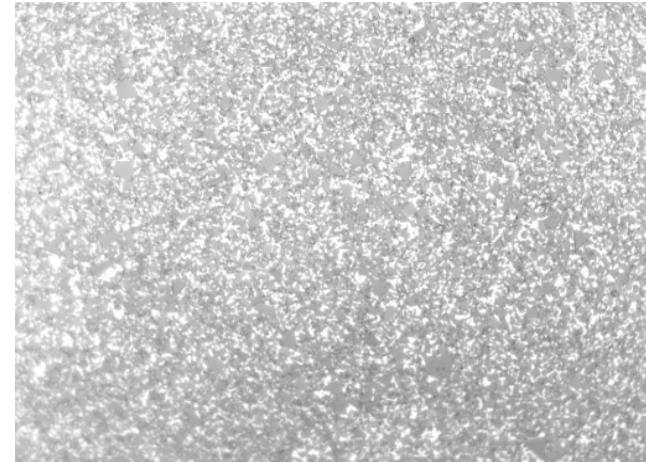
Creating and Manufacturing Excellence since 1965

LEECH CARBIDE

1085 Lamont Drive
Meadville, PA 16335 USA
Phone: (814) 724-5454
Toll Free: (800) 441-7385
Fax: (814) 724-5493
Website: <http://www.leechcarbide.com>

MATERIAL CERTIFICATION:

LEECH CARBIDE GRADE:	LC 215	
% TUNGSTEN CARBIDE (WC)	85.0%	
% COBALT	15.0%	
AVERAGE GRAIN SIZE, MICRONS	2.5	MEDIUM
ROCKWELL (A)	88.5	
DENSITY, g/cc	14.17	
T.R.S.	489	



DANIEL T. LEECH, PRESIDENT
LEECH CARBIDE, INC.