



**LEECH CARBIDE**

Creating and Manufacturing Excellence since 1965

## LEECH CARBIDE

1085 Lamont Drive

Meadville, PA 16335 USA

Phone: (814) 724-5454

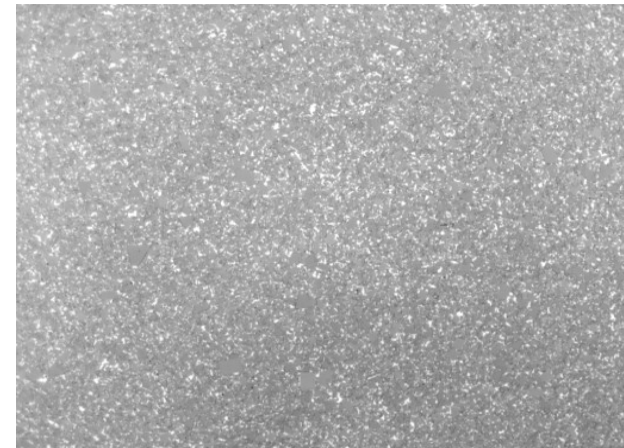
Toll Free: (800) 441-7385

Fax: (814) 724-5493

Website: <http://www.leechcarbide.com>

### MATERIAL CERTIFICATION:

LEECH CARBIDE GRADE:	LC AA	
% TUNGSTEN CARBIDE (WC)	89.5-91.0%	
% COBALT	10-11%	
AVERAGE GRAIN SIZE, MICRONS	0.8-4.0	FINE/COURSE
ROCKWELL (A)	89.5-91.0	
DENSITY, g/cc	14.17	
T.R.S.	490	



DANIEL T. LEECH, PRESIDENT  
LEECH CARBIDE, INC.