

**LEECH CARBIDE**

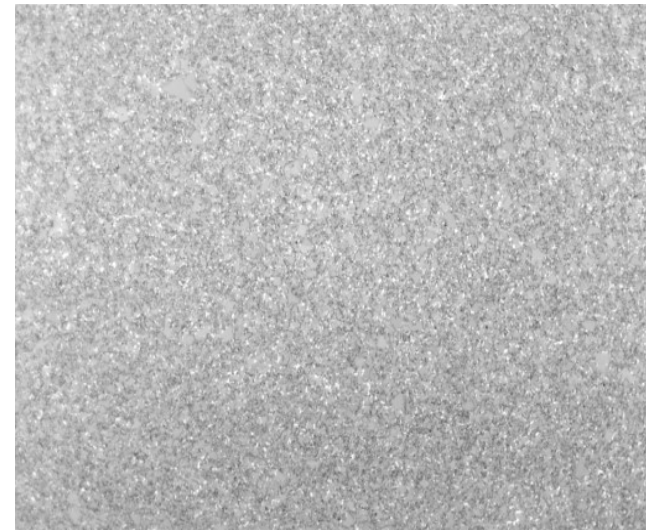
Creating and Manufacturing Excellence since 1965

## LEECH CARBIDE

1085 Lamont Drive  
Meadville, PA 16335 USA  
Phone: (814) 724-5454  
Toll Free: (800) 441-7385  
Fax: (814) 724-5493  
Website: <http://www.leechcarbide.com>

### MATERIAL CERTIFICATION:

LEECH CARBIDE GRADE:	LC 109	
% TUNGSTEN CARBIDE (WC)	91.00%	
% COBALT	8.75%	
% TiC	2.5%	
AVERAGE GRAIN SIZE, MICRONS	1.1	FINE
ROCKWELL (A)	91.7	
DENSITY, g/cc	14.69	
TR.S.	497	



DANIEL T. LEECH, PRESIDENT  
LEECH CARBIDE, INC.