

# LEECH CARBIDE

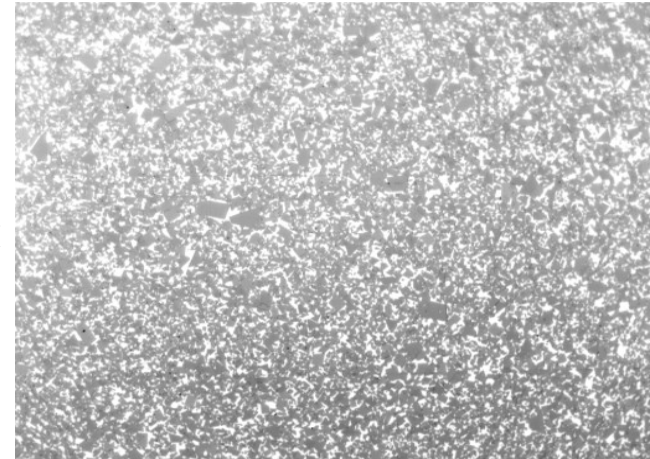
Creating and Manufacturing Excellence since 1965

## LEECH CARBIDE

1085 Lamont Drive  
Meadville, PA 16335 USA  
Phone: (814) 724-5454  
Toll Free: (800) 441-7385  
Fax: (814) 724-5493  
Website: <http://www.leechcarbide.com>

### MATERIAL CERTIFICATION:

LEECH CARBIDE GRADE:	LC 217	
% TUNGSTEN CARBIDE (WC)	83.0%	
% COBALT	17.0%	
AVERAGE GRAIN SIZE, MICRONS	2.5	MEDIUM
ROCKWELL (A)	87.0	
DENSITY, g/cc	13.85	
T.R.S.	471	



DANIEL T. LEECH, PRESIDENT  
LEECH CARBIDE, INC.